

Original



1 NORTH ELEVATION
A201 SCALE: 1/8"=1'-0"

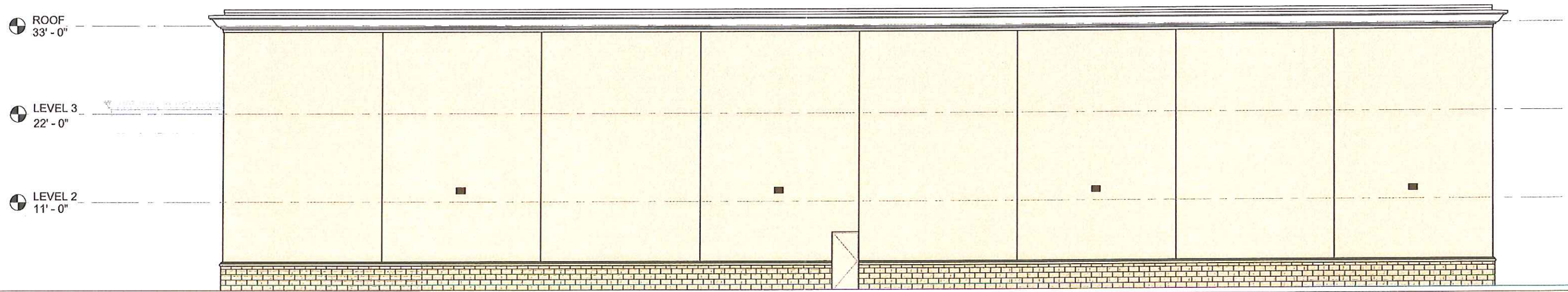


2 EAST ELEVATION
A201 SCALE: 1/8"=1'-0"

STORAGEMaxTM
Have you reached your Max?

GLUCKSTADT, MS

Original



3 SOUTH ELEVATION
A201 SCALE: 1/8"=1'-0"

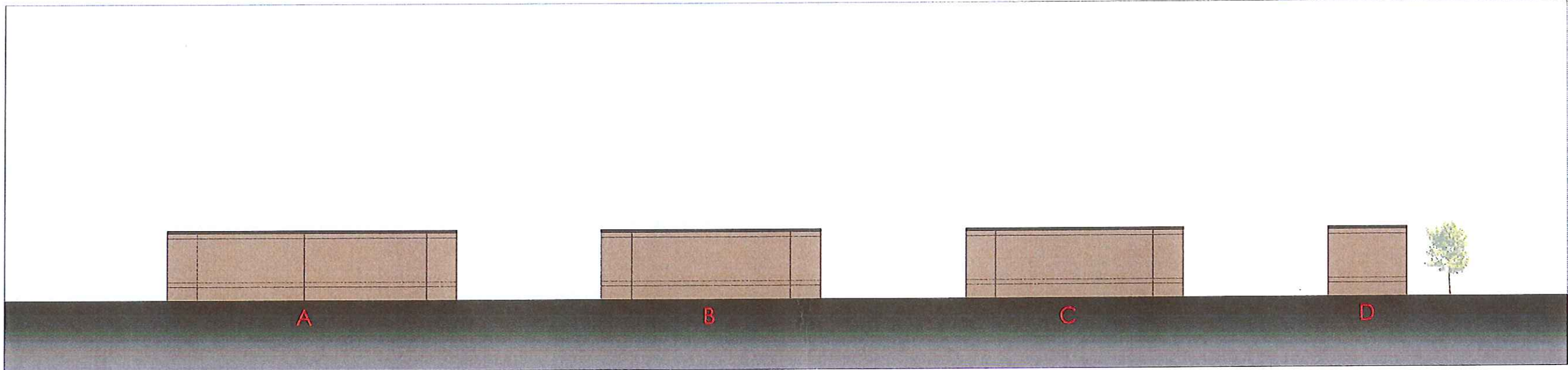


4 WEST ELEVATION
A201 SCALE: 1/8"=1'-0"

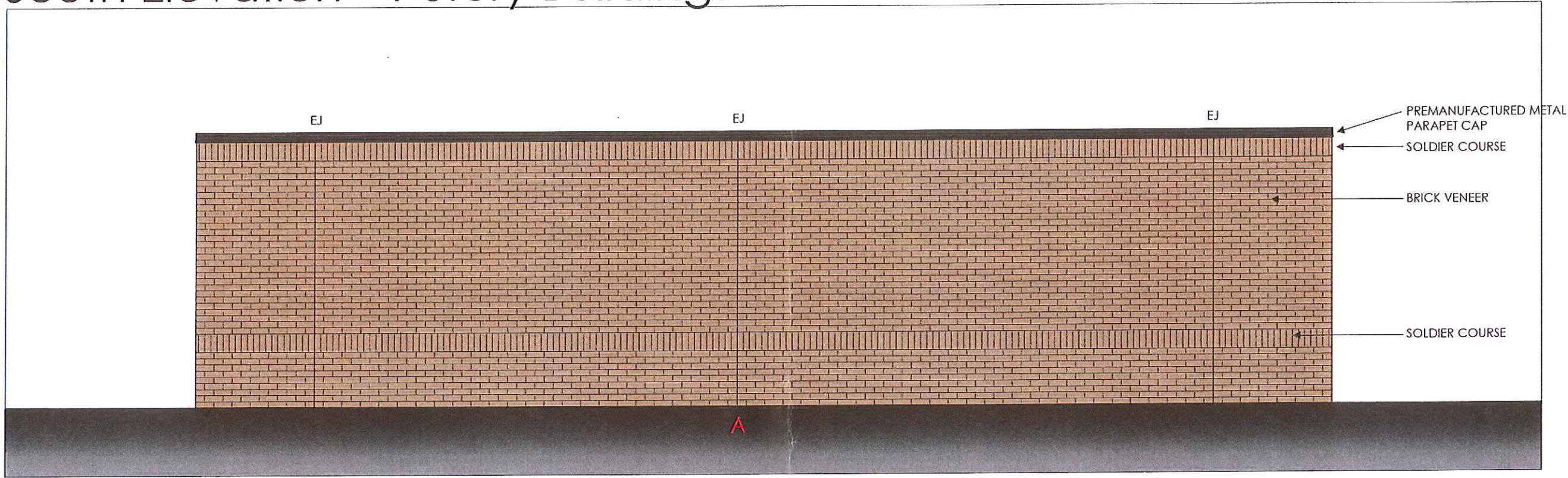
STORAGE MAXTM
Have you reached your Max?

GLUCKSTADT, MS

Original



South Elevation - 1 Story Buildings



Enlarged South Elevation - 1 Story Building

STORAGE MAXTM

Have you reached your Max?

GLUCKSTADT, MS

Original

D-Series Size 1 LED Area Luminaire

DSX1-LED-P8-40K-T3M-MVOLT-D5

SA

Capable Luminaire

Specifications: Length: 12.1", Width: 13.1", Height: 3.1", Weight: 2.1 lbs

Ordering Information: EXAMPLE: DSX1 LED P7 40K T3M MVOLT D5 D0B2D

Series	Color Temperature	Beam Spread	Mounting	Notes
DSX1	4000K	40°	T3M	Standard
DSX1	5000K	40°	T3M	Standard
DSX1	6000K	40°	T3M	Standard

LITHONIA LIGHTING

D-Series Size 1 LED Area Luminaire

DSX1-LED-P8-40K-T3M-MVOLT-D5

SB

Capable Luminaire

Specifications: Length: 12.1", Width: 13.1", Height: 3.1", Weight: 2.1 lbs

Ordering Information: EXAMPLE: DSX1 LED P7 40K T3M MVOLT SFA D0B2D

Series	Color Temperature	Beam Spread	Mounting	Notes
DSX1	4000K	40°	T3M	Standard
DSX1	5000K	40°	T3M	Standard
DSX1	6000K	40°	T3M	Standard

LITHONIA LIGHTING

D-Series Size 1 LED Wall Luminaire

DSXW1-LED-20C-1000-40K-T3M-MVOLT

W4

Capable Luminaire

Specifications: Length: 13.1", Width: 4.1", Height: 6.1", Weight: 1.1 lbs

Ordering Information: EXAMPLE: DSXW1 LED 20C 1000 40K T3M MVOLT D0B2D

Series	Color Temperature	Beam Spread	Mounting	Notes
DSXW1	4000K	20°	T3M	Standard
DSXW1	5000K	20°	T3M	Standard
DSXW1	6000K	20°	T3M	Standard

LITHONIA LIGHTING

6" Evo® Pendant

EVO-4025-6AR-WDLS

Gothenm Architectural Design Lighting LED Downlights

Capable Luminaire

Specifications: Length: 6.0", Width: 6.0", Height: 2.0", Weight: 0.5 lbs

Ordering Information: EXAMPLE: EVO 4025 6AR WDLS

Series	Color Temperature	Beam Spread	Mounting	Notes
EVO	4000K	40°	WDL	Standard
EVO	5000K	40°	WDL	Standard
EVO	6000K	40°	WDL	Standard

gothem

LUMINAIRE SPECIFICATION

UML-30901 Millennium wall light

Specifications: Length: 37.4", Height: 31.2", Weight: 3.2 lbs

Ordering Information: EXAMPLE: UML-30901-C27R-40K-102A-Clear

Series	Color Temperature	Mounting	Notes
UML-30901	4000K	C27R	Standard
UML-30901	5000K	C27R	Standard
UML-30901	6000K	C27R	Standard

SPECTRUM LIGHTING INC.

6" ROUND DIRECT / INDIRECT FOCUSED ILLUMINATION

C0618J0XT, C0618J0XT - WALL MOUNT

Specifications: Length: 6.0", Width: 6.0", Height: 6.0", Weight: 0.5 lbs

Ordering Information: EXAMPLE: C0618J0XT-C0618J0XT-S0500-S0500-S0500

Series	Color Temperature	Beam Spread	Mounting	Notes
C0618J0XT	5000K	0°	S0500	Standard
C0618J0XT	6000K	0°	S0500	Standard
C0618J0XT	4000K	0°	S0500	Standard

SPECTRUM LIGHTING INC.

D-Series Size 1 LED Wall Luminaire

DSXW1-LED-20C-1000-40K-T3M-MVOLT

W7F

Capable Luminaire

Specifications: Length: 13.1", Width: 4.1", Height: 6.1", Weight: 1.1 lbs

Ordering Information: EXAMPLE: DSXW1 LED 20C 1000 40K T3M MVOLT D0B2D

Series	Color Temperature	Beam Spread	Mounting	Notes
DSXW1	4000K	20°	T3M	Standard
DSXW1	5000K	20°	T3M	Standard
DSXW1	6000K	20°	T3M	Standard

LITHONIA LIGHTING

STORAGE MAX

Ordering Information: EXAMPLE: STOR MAX 1000 40K T3M MVOLT D0B2D

Series	Color Temperature	Beam Spread	Mounting	Notes
STOR MAX	4000K	40°	T3M	Standard
STOR MAX	5000K	40°	T3M	Standard
STOR MAX	6000K	40°	T3M	Standard

gothem

FIXTURE NOTE:
 FIXTURE SHOWN ON THIS SHEET IS FOR REFERENCE ONLY. SEE ACTUAL FIXTURE SCHEDULE ELSEWHERE IN THIS DOCUMENT FOR ACTUAL CATALOG NUMBER AND DESCRIPTION.

P:\1810\18101311_EI.13 SITE FIXTURE SPECIFICATIONS & DETAILS.dwg, 10/30/2018 13:01:11 PM, Gertson DSI, P_DWG TO PDF.pc3

CHECKED BY: _____

DATE: _____

PROJECT LOCATION: _____

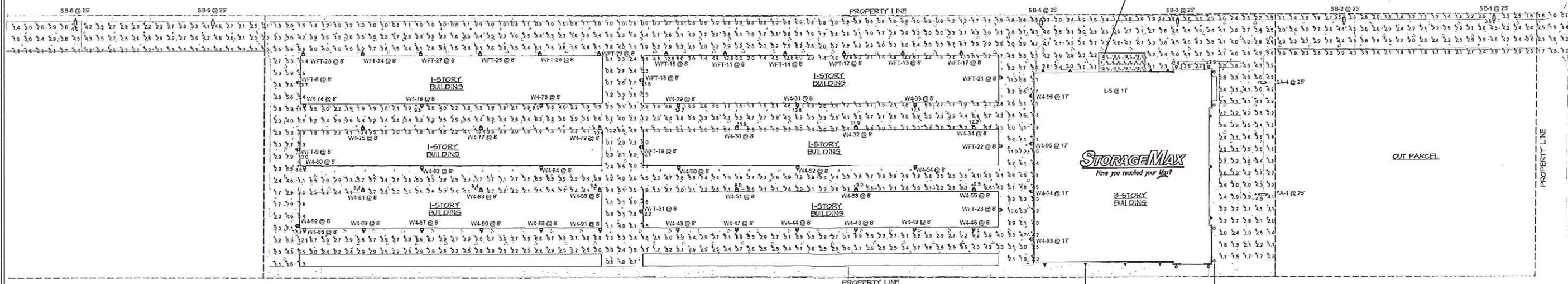
SHEET TITLE: _____

SOUHEIL CHEHAÏEB, P.E.
 CONSULTING PROFESSIONAL ENGINEER
 3702 AZEEZ ST.
 TAMPA, FL 33609
 (813) 976-1415
 www.chahaib.com

STORAGE MAX
 MADISON COUNTY
 GLUCKSTADT, MS

SHEET NO. **EI.13**

Original



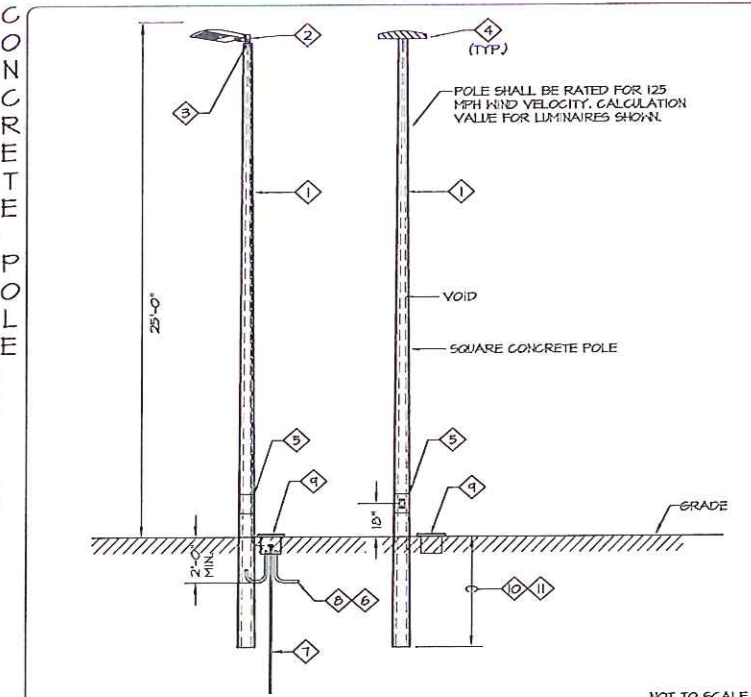
DATE:	09-06-16
NO.:	
BY:	
CHKD BY:	
DATE:	
NO.:	
BY:	
CHKD BY:	
DATE:	
NO.:	
BY:	
CHKD BY:	
DATE:	

PROJECT LOCATION:	STORAGE MAX
CLIENT:	MADISON COUNTY
ADDRESS:	GLUCKSTADT, MS
SHEET TITLE:	PHOTOMETRIC SITE PLAN

PROJECT LOCATION:	STORAGE MAX
CLIENT:	MADISON COUNTY
ADDRESS:	GLUCKSTADT, MS
SHEET TITLE:	PHOTOMETRIC SITE PLAN

SOUHEIL CHEHAIB, P.E.
CONSULTING PROFESSIONAL ENGINEER
11755 ATHERLY ST
TAMPA, FL 33626
(813) 976-4616
www.schehaib.com
LIC# 13204

DETAIL



NOT TO SCALE

NOTES:

- DIRECT BURIAL POLE SHALL BE RATED FOR WIND VELOCITY AS INDICATED. CALCULATION SHALL BE BASED ON THE EPA VALUE FOR THE LUMINAIRE SHOWN PER POLE.
- ELECTRICAL CONTRACTOR TO COORDINATE THE TYPE OF TENSION OR MOUNTING REQUIRED WITH THE FIXTURE MANUFACTURER, TO MOUNT THE SITE LIGHT FIXTURE TO THE POLE AS INTENDED AND INDICATED.
- NO. 6 GROUND CONDUCTOR FURNISHED WITH THE POLE, BONDED AT THE J BOX AT THE BOTTOM OF THE POLE, SEE NOTE #1, AND TO THE EQUIPMENT GROUND CONDUCTOR RAN WITH THE CIRCUIT FROM THE DESIGNATED PANEL IN THE BUILDING.
- LUMINAIRE. SEE FIXTURE SCHEDULE ON THE SITE LIGHTING PLAN FOR QUANTITY, TYPE, AND OPTIC ORIENTATION. PROVIDE PROPER BRACKETS TO MOUNT THE FIXTURE AS SHOWN ON THE PHOTOMETRIC PLAN. COORDINATE WITH THE FACTORY AND PROVIDE BRACKET CUT SHEET TO THE ENGINEER FOR APPROVAL PRIOR TO RELEASE.
- HAND HOLE AT 18" A.F.S.
- CONDUIT, EXTEND TO PULL BOX OR NEXT POLE AS REQUIRED.
- 3/4" x 10'-0" COPPER CLAD GROUND ROD FOR LIGHTNING PROTECTION. CONNECTION TO THE GROUND ROD SHALL BE MADE VIA A UL LISTED MECHANICAL CONNECTION.
- SEE ELECTRICAL SITE PLAN FOR CONDUIT AND WIRE SIZES AND DESTINATION PANEL. WIRE SIZE UP THE POLE SHALL BE SAME SIZE FEEDING THE POLE.
- PROVIDE FLUSH IN GRADE (12"x12"x10" MINIMUM) WEATHERPROOF ELECTRIC HANDHOLE ENCLOSURE. ELECTRICAL HANDHOLE ENCLOSURE SHALL BE PROVIDED AND INSTALLED IN ACCORDANCE WITH N.E.C. ARTICLE 314.20 "HANDHOLE ENCLOSURES". THESE BOXES SHALL BE USED AS PULL BOXES ONLY. NO TERMINATIONS SHALL BE MADE IN THESE BOXES EXCEPT FOR THE GROUND CONDUCTOR. LOCATE BOX WITHIN 3'-0" OF POLE BASE, WHERE POSSIBLE. THE BOX SHALL BE LOCATED IN A LANDSCAPE AREA ONLY AND NOT SUSCEPTIBLE TO ANY TRAFFIC CONDITION. COVER SHALL BE RATED FOR THE LOAD IT IMPOSES UPON IT, AND SHALL BE PROVIDED WITH LOGO STAMPING "ELECTRICAL".
- DEPTH OF THE EMBEDMENT OF THE POLE SHALL BE AS RECOMMENDED BY POLE MANUFACTURER TO MEET REQUIRED WIND LOADINGS. MINIMUM EMBEDMENT SHALL NOT BE LESS THAN 8'-0", OR AS LISTED IN NOTE #11 BELOW, WHICHEVER IS MORE STRINGENT.
- PROVIDE EMBEDMENT LENGTH DESIGN SIGNED AND SEALED BY A MISSISSIPPI CERTIFIED STRUCTURAL ENGINEER, THAT MEETS THE REQUIRED WIND SPEED AS A MINIMUM, BASED ON POLE HEIGHT, FIXTURES EPA RATINGS, AND SPECIFIC SITE SOIL CONDITIONS. SOIL REPORT CAN BE OBTAINED BY CONTACTING THE PROJECT ARCHITECT.

Surface Schedule	
Name	Area (sq ft)
Bottom	3004.44
Side 1	81.83
Side 2	3004.44
Side 3	81.83
Side 4	3004.44
Top	81.83

Luminaire Locations	
No.	Label
1	L
2	L
3	L
4	L
5	L
6	L
7	L
8	L
9	SA
10	SA
11	SA
12	SA
13	SA
14	SA
15	SA
16	SA
17	SA
18	SA
19	SA
20	SA
21	SA
22	SA
23	SA
24	SA
25	SA
26	SA
27	SA
28	SA
29	SA
30	SA
31	SA
32	SA
33	SA
34	SA
35	SA
36	SA
37	SA
38	SA
39	SA
40	SA
41	SA
42	SA
43	SA
44	SA
45	SA
46	SA
47	SA
48	SA
49	SA
50	SA
51	SA
52	SA
53	SA
54	SA
55	SA
56	SA
57	SA
58	SA
59	SA
60	SA
61	SA
62	SA
63	SA
64	SA
65	SA
66	SA
67	SA
68	SA
69	SA
70	SA
71	SA
72	SA
73	SA
74	SA
75	SA
76	SA
77	SA
78	SA
79	SA
80	SA
81	SA
82	SA
83	SA
84	SA
85	SA
86	SA
87	SA
88	SA
89	SA
90	SA
91	SA
92	SA
93	SA
94	SA
95	SA
96	SA
97	SA
98	SA
99	SA
100	SA

NOTES

① DECORATIVE TYPE FIXTURE. NOT INCLUDED IN PHOTOMETRIC STUDY. SEE ARCHITECTURAL ELEVATION FOR LOCATION.

Symbol	Label	Quantity	Manufacturer	Catalog Number	Description	Lamp	Number Lamps	Fixture Name	Lumens Per Lamp	Light Loss Factor	Height
W4	W4	41	Lumina Lighting	DSXV1 LED 200 1000 4K 12M MVOLT	DSXV1 LED WITH (2) 10 LED LIGHT ENGINES, TYPE 1M OPTIC, 4000K @ 1000-A.	LED	1	DSXV1_LED_200_1000_4K_12M_V1	7420	0.9	132
WFT	WFT	23	Lumina Lighting	DSXV1 LED 200 1000 4K 12M MVOLT	DSXV1 LED WITH (2) 10 LED LIGHT ENGINES, TYPE 1FM OPTIC, 4000K @ 1000-A.	LED	1	DSXV1_LED_200_1000_4K_12M_V1FM	7111	0.9	132
L	L	8	Selman Architectural Lighting	EVO 4005 6AR W/LS	4000K 200LM, 6030, 6in CLEAR WIDE DIST. SPECULAR	LED	1	EVO_40_25_6AR_W/LS_16	2300	0.9	22.5
SA	SA	2	Lumina Lighting	DSX1 LED F8 4K 12M MVOLT	DSX1 LED F8 4K 12M MVOLT	LED	1	DSX1_LED_F8_4K_12M_V1	2258	0.9	127
SB	SB	8	Lumina Lighting	DSX1 LED F8 4K 12M MVOLT	DSX1 LED F8 4K 12M MVOLT with house-side shield	LED	1	DSX1_LED_F8_4K_12M_V1-Ses	1531	0.9	227

Description	Symbol	Avg	Max	Min	Max/Min	Avg/Min
CANOPY AREA	+	12.5 E	25.5 E	11.9 E	2.21	1.61
OVERALL SITE	+	3.7 E	13.7 E	0.8 E	22.6 E	8.21

ALL SITE AND BUILDING LIGHTS PROPOSED ON THIS PROJECT ARE DESIGNED AS FULL CUTOFF CLASSIFICATION WITH ZERO UP LIGHT COMPONENTS.

THESE PHOTOMETRICS ARE INTENDED FOR DESIGN AND EVALUATION PURPOSES ONLY. THE POINT-BY-POINT SHOWN IS BASED ON A COMPUTER LIGHTING PROGRAM WITH APPROXIMATED PARAMETERS. THEREFORE, THESE PHOTOMETRICS MAY VARY FROM ACTUAL FIELD CONDITIONS.

FIXTURE NOTE:
FIXTURE SHOWN ON THIS SHEET IS FOR REFERENCE ONLY. SEE ACTUAL FIXTURE SCHEDULE ELSEWHERE IN THIS DOCUMENTS FOR ACTUAL CATALOG NUMBER AND DESCRIPTION.

Original

SARGENT JUNIPER
(4)

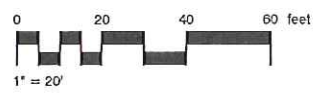
30' ACCESS EASEMENT

ACCESS CONTROL
GATES

OUT PARCEL
49,571 sq. ft.
1.1380 acres

CONCRETE PAVING

Sheet L3
Sheet L2



REVISIONS

P.O. BOX 2425
MADISON, MISSISSIPPI 39130
601-906-3477 PHONE
WWW.MCCORRYDESIGNS.COM

**MCCORRY
& ASSOCIATES**
land planning consultants

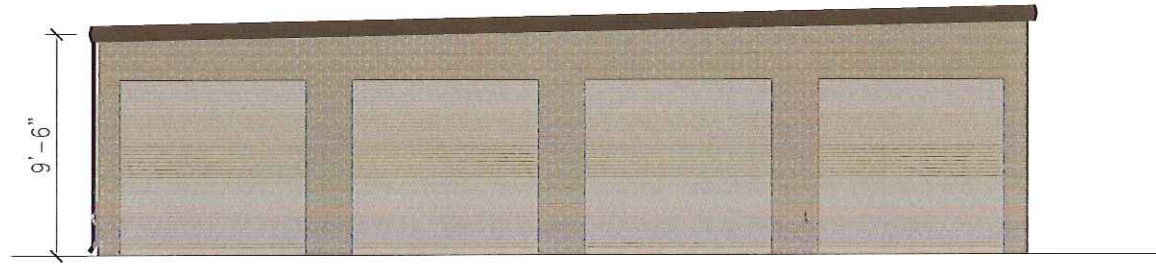


Landscaping Planting Plan
STORAGE MAX
Madison County, Mississippi

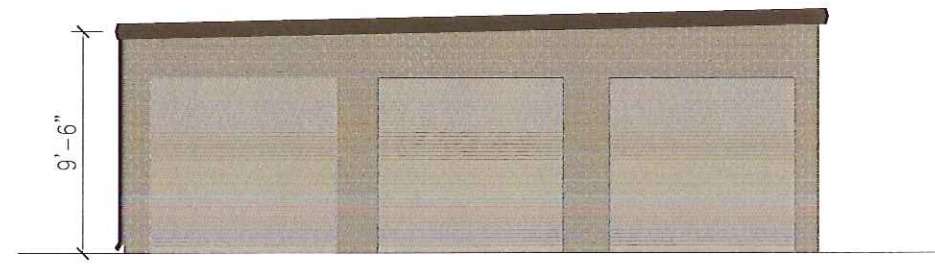
DATE: 10/29/18
DRAWN: A.M.C.
CHECKED:

L3

Amended

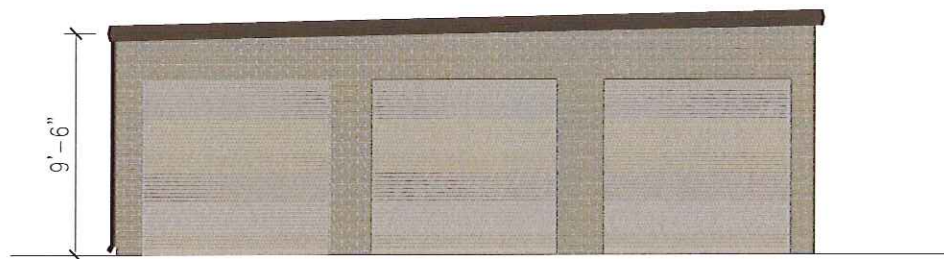


1 SOUTH ELEVATION - BUILDING 2
SCALE : 1/8" = 1'-0"

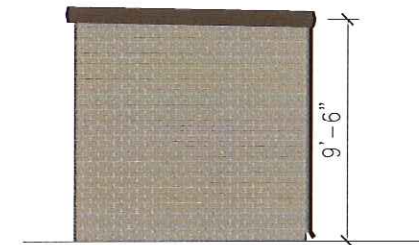


2 SOUTH ELEVATION - BUILDING 3
SCALE : 1/8" = 1'-0"

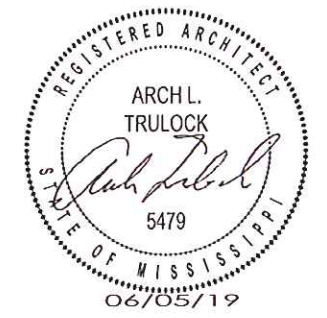
NOTE: BRICK COLOR TO MATCH STONE ON MAIN BUILDING. DOOR COLOR TO BE JANUS STANDARD COLOR DESERT SAND



3 SOUTH ELEVATION - BUILDING 4
SCALE : 1/8" = 1'-0"



4 SOUTH ELEVATION - BUILDING 5
SCALE : 1/8" = 1'-0"



2222 2ND AVE. NORTH
#401
BIRMINGHAM, AL
35203
205.410.7644

NEW SELF STORAGE FACILITY
STORAGEMAX
GERMANTOWN
MADISON COUNTY, MS

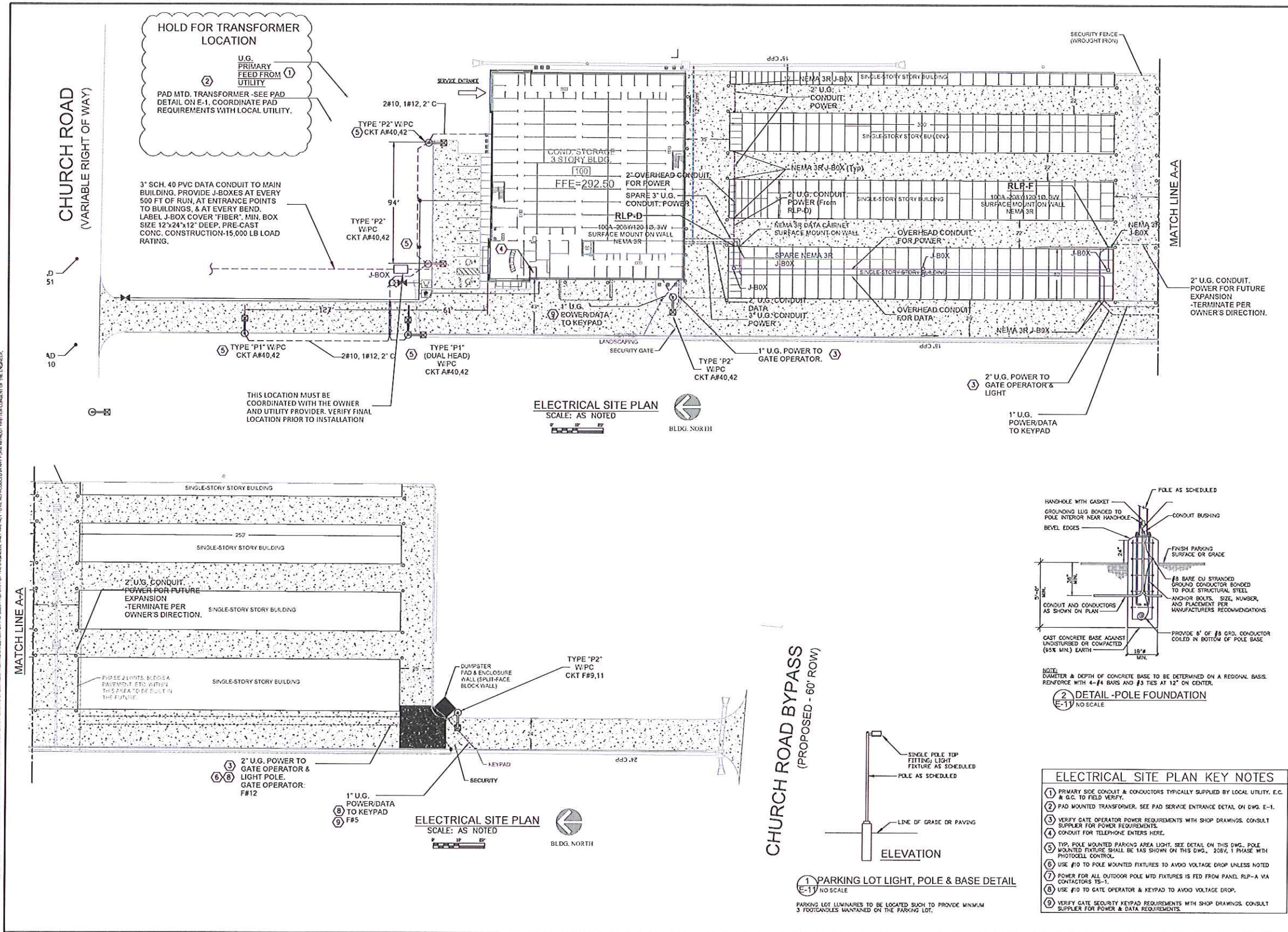
DATE: 06/05/19
FOR: SITE REVIEW
PROJECT #: 1002.01

SD-1

S
E
A
L

T
I
T
L
E

A
R
C
H
L
.
T
R
U
L
O
C
K
.
A
R
C
H
I
T
E
C
T



RELEASED FOR CONSTRUCTION
BY: [Signature]
DATE: 05/16/2019

RELEASED FOR PERMIT
BY: [Signature]
DATE: 05/16/2019

RELEASED FOR APPROVAL
BY: [Signature]
DATE: 04/12/2019

Parks Engineering Inc.
1572 Montgomery Highway, Ste. 203
Birmingham, Alabama 35216
Email: ParksEng_Inc@hotmail.com
PH: 205-623-2656



StorageMax
A New Self Storage Facility for
386 CHURCH ROAD
GERMENTOWN, MS 39110



Arch Trulock Architect
3000 7th Avenue South
Birmingham, AL

MARK	DATE	DESCRIPTION
△	05/16/19	TOR PERMIT
△	04/30/19	E.L. for 65th Revision
△	04/16/19	PEL for 35th Revision

ORIGINAL ISSUE DATE: 04/12/19
PROJECT NO: 19-1627
CAD DWG FILE: 1627E11.DWG
DRAWN BY:
CHECKED BY:

These drawings and/or specifications and all ideas, designs, inventions, and arrangements represented thereon are and shall remain the sole and exclusive property of The Engineer and no part thereof shall be copied, disclosed to others or used in connection with any other work or project other than the specified project for which they have been prepared and developed, without prior written consent of The Engineer.

Visual contact with these plans and/or specifications constitutes conclusive evidence of acceptance of these restrictions.

ELECTRICAL SITE PLAN "1"
SCALE: 1/32" = 1'-0"
DRAWING NUMBER
E-11
SHEET NO. 11 OF 14

1) CONTRACTOR MAY OFFER LIGHT FIXTURES OF A DIFFERENT MANUFACTURER PROVIDED THEY ARE EQUIVALENT TO THE SPECIFIED FIXTURE AND APPROVED BY THE OWNER.

WSQ LED
Architectural Wall Sconce

Specifications:
Luminaire: WSQ
Height: 10 1/2"
Depth: 3 1/2"
Width: 3 1/2"
Weight: 1.5 lbs

Features:
- Back Box: 800V, ELCV
- Back Box: 800V, ELCV
- Back Box: 800V, ELCV

Example WSQ LED 120V 40K 4M-MVOLT

Part	Quantity	Description	Notes
WSQ	1	WSQ LED 120V 40K 4M-MVOLT	

W4 DSXW1 LED-20C 1000-40K-T4M-MVOLT
W1 DSXW1 LED-20C 1000-40K-T4M-MVOLT

Specifications:
Luminaire: W4, W1
Height: 13 1/2"
Depth: 3 1/2"
Width: 3 1/2"
Weight: 1.5 lbs

Example DSXW1 LED 20C 1000-40K T4M-MVOLT

Part	Quantity	Description	Notes
W4	1	W4 DSXW1 LED-20C 1000-40K-T4M-MVOLT	
W1	1	W1 DSXW1 LED-20C 1000-40K-T4M-MVOLT	

SELECTION OF THIS FIXTURE BY OWNER'S LIGHTING CONSULTANT SESCO LIGHTING. CONTACT TREVOR MOORE FOR QUESTIONS.

LITHONIA LIGHTING

ELM2 LED

Features & Specifications:
- Back Box: 800V, ELCV
- Back Box: 800V, ELCV

Example ELM2 LED

Part	Quantity	Description	Notes
ELM2	1	ELM2 LED	

COOPER LIGHTING - SURE-LITES®

EXIT

Specifications:
- Back Box: 800V, ELCV
- Back Box: 800V, ELCV

Example COOPER LIGHTING - SURE-LITES® EXIT

Part	Quantity	Description	Notes
EXIT	1	EXIT	

LUMINIS

W2 SY602-L2L40-R35-120V-XMODTCH
W3 SY602-L2L40-R35L45-120V-XMODTCH

Specifications:
- Back Box: 800V, ELCV
- Back Box: 800V, ELCV

Example SY602-L2L40-R35-120V-XMODTCH

Part	Quantity	Description	Notes
W2	1	W2 SY602-L2L40-R35-120V-XMODTCH	
W3	1	W3 SY602-L2L40-R35L45-120V-XMODTCH	

SELECTION OF THIS FIXTURE BY OWNER'S LIGHTING CONSULTANT SESCO LIGHTING. CONTACT TREVOR MOORE FOR QUESTIONS.

gotham

D1 EVO 40/25 6AR WD LS
Uses 30 Watts

Features & Specifications:
- Back Box: 800V, ELCV
- Back Box: 800V, ELCV

Example D1 EVO 40/25 6AR WD LS

Part	Quantity	Description	Notes
D1	1	D1 EVO 40/25 6AR WD LS	

gotham

D1 EVO 40/25 6AR WD LS
Uses 30 Watts

Features & Specifications:
- Back Box: 800V, ELCV
- Back Box: 800V, ELCV

Example D1 EVO 40/25 6AR WD LS

Part	Quantity	Description	Notes
D1	1	D1 EVO 40/25 6AR WD LS	

LITHONIA LIGHTING

F1
Uses 35 Watts

Features & Specifications:
- Back Box: 800V, ELCV
- Back Box: 800V, ELCV

Example F1

Part	Quantity	Description	Notes
F1	1	F1	

SELECTION OF THIS FIXTURE BY OWNER'S LIGHTING CONSULTANT SESCO LIGHTING. CONTACT TREVOR MOORE FOR QUESTIONS.

LITHONIA LIGHTING

2VTL
Uses 35 Watts

Features & Specifications:
- Back Box: 800V, ELCV
- Back Box: 800V, ELCV

Example 2VTL

Part	Quantity	Description	Notes
2VTL	1	2VTL	

LITHONIA LIGHTING

2VTL
Uses 35 Watts

Features & Specifications:
- Back Box: 800V, ELCV
- Back Box: 800V, ELCV

Example 2VTL

Part	Quantity	Description	Notes
2VTL	1	2VTL	

LITHONIA LIGHTING

W2 SY602-L2L40-R35-120V-XMODTCH
W3 SY602-L2L40-R35L45-120V-XMODTCH

Specifications:
- Back Box: 800V, ELCV
- Back Box: 800V, ELCV

Example SY602-L2L40-R35-120V-XMODTCH

Part	Quantity	Description	Notes
W2	1	W2 SY602-L2L40-R35-120V-XMODTCH	
W3	1	W3 SY602-L2L40-R35L45-120V-XMODTCH	

SELECTION OF THIS FIXTURE BY OWNER'S LIGHTING CONSULTANT SESCO LIGHTING. CONTACT TREVOR MOORE FOR QUESTIONS.

ZTL
Uses 35 Watts

Specifications:
- Back Box: 800V, ELCV
- Back Box: 800V, ELCV

Example ZTL

Part	Quantity	Description	Notes
ZTL	1	ZTL	

ZTL
Uses 35 Watts

Specifications:
- Back Box: 800V, ELCV
- Back Box: 800V, ELCV

Example ZTL

Part	Quantity	Description	Notes
ZTL	1	ZTL	

ZTL
Uses 35 Watts

Specifications:
- Back Box: 800V, ELCV
- Back Box: 800V, ELCV

Example ZTL

Part	Quantity	Description	Notes
ZTL	1	ZTL	

SELECTION OF THIS FIXTURE BY OWNER'S LIGHTING CONSULTANT SESCO LIGHTING. CONTACT TREVOR MOORE FOR QUESTIONS.

RELEASED FOR CONSTRUCTION
BY: [Signature]
DATE: 05/11/2019

RELEASED FOR PERMIT
BY: [Signature]
DATE: 05/15/2019

RELEASED FOR APPROVAL
BY: [Signature]
DATE: 04/12/2019

Parks Engineering Inc.
1572 Montgomery Highway, Ste. 208
Birmingham, Alabama 35216
Email: ParksEng_J@bellsouth.net
PH: 205-823-2656

PROJECT IDENTIFICATION
A New Self Storage Facility for
STORAGEMAX
386 CHURCH ROAD
GERMANTOWN, MS 39110

STORAGEMAX
Have you reached your Max?

Arch Trulock
Architect
3000 7th Avenue South
Birmingham AL

MARK	DATE	DESCRIPTION
△	05/16/19	FOR PERMIT
△	04/30/19	REL. For 65% Review
△	04/16/19	REL. For 35% Review

ORIGINAL ISSUE DATE: 04/12/19
PROJECT NO: 19-1627
CAD DWG FILE: 1627E13.DWG
DRAWN BY:
CHECKED BY:

ELECTRICAL LIGHTING SPECIFICATIONS

DRAWING NUMBER
E-13
SHEET NO. 13 OF 15

Amended

LIGHT FIXTURE NOTES: 1) CONTRACTOR MAY OFFER LIGHT FIXTURES OF A DIFFERENT MANUFACTURER PROVIDED THEY ARE EQUIVALENT TO THE SPECIFIED FIXTURE AND APPROVED BY THE OWNER.

LITHONIA LIGHTING

K (L=48 Inch) Uses 28 Watts F (L=24 Inch) Uses 26 Watts



REVISIONS & SPECIFICATIONS: Includes detailed technical specifications for the K and F fixtures, including beam spread, mounting, and electrical requirements.

LITHONIA LIGHTING

K-E Uses 28 Watts (w/ EMERG. BATTERY)



REVISIONS & SPECIFICATIONS: Includes detailed technical specifications for the K-E fixture, including emergency battery requirements.

LITHONIA LIGHTING

P1 & P2 Uses 207 Watts W/ 25 FT-POLE



REVISIONS & SPECIFICATIONS: Includes detailed technical specifications for the P1 and P2 fixtures, including pole mounting details.

LITHONIA LIGHTING

Includes manufacturer logo and contact information.

CLX LED Linea

Table listing various CLX LED Linea fixture models with columns for model number, wattage, beam spread, and other specifications.

Table listing various CLX LED Linea fixture models with columns for model number, wattage, beam spread, and other specifications.

CLX LED Linea

Table listing various CLX LED Linea fixture models with columns for model number, wattage, beam spread, and other specifications.

Table listing various CLX LED Linea fixture models with columns for model number, wattage, beam spread, and other specifications.

CLX LED Linea

Table listing various CLX LED Linea fixture models with columns for model number, wattage, beam spread, and other specifications.

Table listing various CLX LED Linea fixture models with columns for model number, wattage, beam spread, and other specifications.

CLX LED Linea

Table listing various CLX LED Linea fixture models with columns for model number, wattage, beam spread, and other specifications.

Table listing various CLX LED Linea fixture models with columns for model number, wattage, beam spread, and other specifications.

CLX LED Linea

Table listing various CLX LED Linea fixture models with columns for model number, wattage, beam spread, and other specifications.

Table listing various CLX LED Linea fixture models with columns for model number, wattage, beam spread, and other specifications.

CLX LED Linea

Table listing various CLX LED Linea fixture models with columns for model number, wattage, beam spread, and other specifications.

Table listing various CLX LED Linea fixture models with columns for model number, wattage, beam spread, and other specifications.

COOPER LIGHTING - SURE-LITES

Table listing various Cooper Lighting Sure-Lites fixture models with columns for model number, wattage, beam spread, and other specifications.

Table listing various Cooper Lighting Sure-Lites fixture models with columns for model number, wattage, beam spread, and other specifications.

COOPER LIGHTING - SURE-LITES

Table listing various Cooper Lighting Sure-Lites fixture models with columns for model number, wattage, beam spread, and other specifications.

Table listing various Cooper Lighting Sure-Lites fixture models with columns for model number, wattage, beam spread, and other specifications.

COOPER LIGHTING - SURE-LITES

Table listing various Cooper Lighting Sure-Lites fixture models with columns for model number, wattage, beam spread, and other specifications.

Table listing various Cooper Lighting Sure-Lites fixture models with columns for model number, wattage, beam spread, and other specifications.

COOPER LIGHTING - SURE-LITES

Table listing various Cooper Lighting Sure-Lites fixture models with columns for model number, wattage, beam spread, and other specifications.

Table listing various Cooper Lighting Sure-Lites fixture models with columns for model number, wattage, beam spread, and other specifications.

COOPER LIGHTING - SURE-LITES

Table listing various Cooper Lighting Sure-Lites fixture models with columns for model number, wattage, beam spread, and other specifications.

Table listing various Cooper Lighting Sure-Lites fixture models with columns for model number, wattage, beam spread, and other specifications.

COOPER LIGHTING - SURE-LITES

Table listing various Cooper Lighting Sure-Lites fixture models with columns for model number, wattage, beam spread, and other specifications.

Table listing various Cooper Lighting Sure-Lites fixture models with columns for model number, wattage, beam spread, and other specifications.

TCP PRO LED Dimmable PAR30 lamps



Table listing various TCP PRO LED Dimmable PAR30 lamp models with columns for model number, wattage, beam spread, and other specifications.

ITL30 Exit Lighting Panel

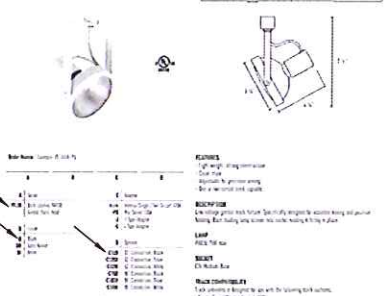


Table listing various ITL30 Exit Lighting Panel models with columns for model number, wattage, beam spread, and other specifications.

One Circuit Track Power System

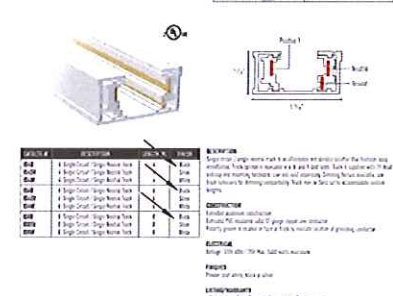


Table listing various One Circuit Track Power System models with columns for model number, wattage, beam spread, and other specifications.

RELEASED FOR CONSTRUCTION BY DATE 05/15/2019

RELEASED FOR PERMIT BY DATE 05/15/2019

RELEASED FOR APPROVAL BY DATE 04/12/2019

Parks Engineering Inc. 1572 Montgomery Highway, Ste. 208 Birmingham, Alabama 35216



PROJECT IDENTIFICATION: A New Self Storage Facility for STORAGE MAX 386 CHURCH ROAD GERMANTOWN, MS 39110



Arch Trulock Architect 3000 7th Avenue South Birmingham, AL

Revision table with columns for MARK, DATE, and DESCRIPTION.

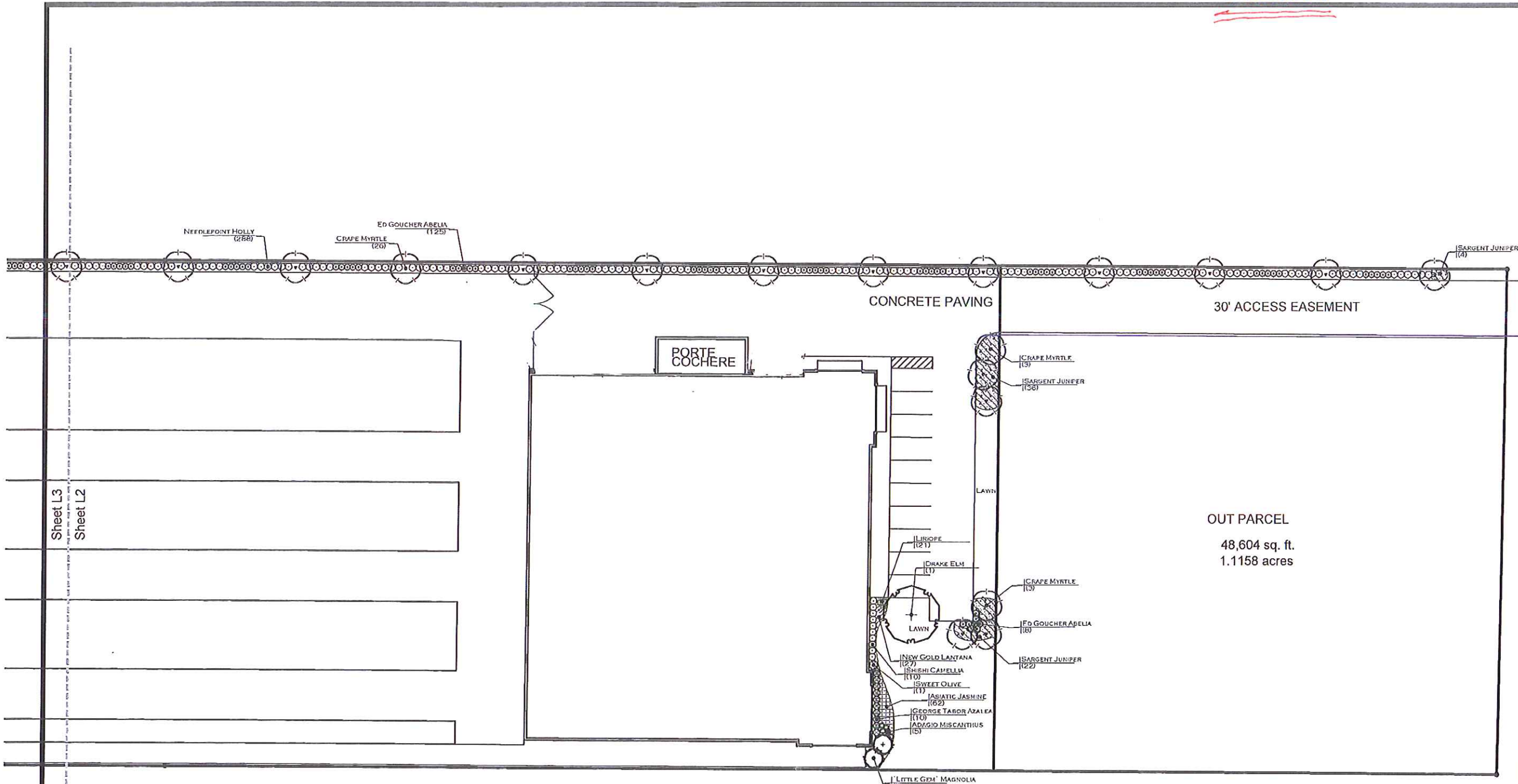
ORIGINAL ISSUE DATE: 04/12/19 PROJECT NO: 19-1627 CAD DWG FILE: 1627E14.DWG

CHECKED BY: The drawings and/or specifications, and all ideas, designs, inventions, and arrangements represented thereon are and shall remain the sole and exclusive property of The Engineer and no part thereof shall be copied, disclosed to others or used in connection with any other job or project other than the specified project for which they have been prepared and developed, without prior written consent of the Engineer.

Visual contact with the original and/or specifications constitutes conclusive evidence of acceptance of those restrictions.

ELECTRICAL LIGHTING SPECIFICATIONS SHEET NO. 14 OF 15 DRAWING NUMBER E-14

Amended

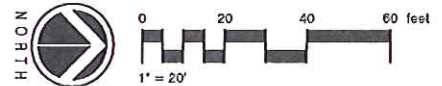


Sheet L3
Sheet L2

P.O. BOX 2425
MADISON, MISSISSIPPI 39130
(601) 906-5477 PHONE
WWW.MCCORRYDESIGN.COM



REVISIONS

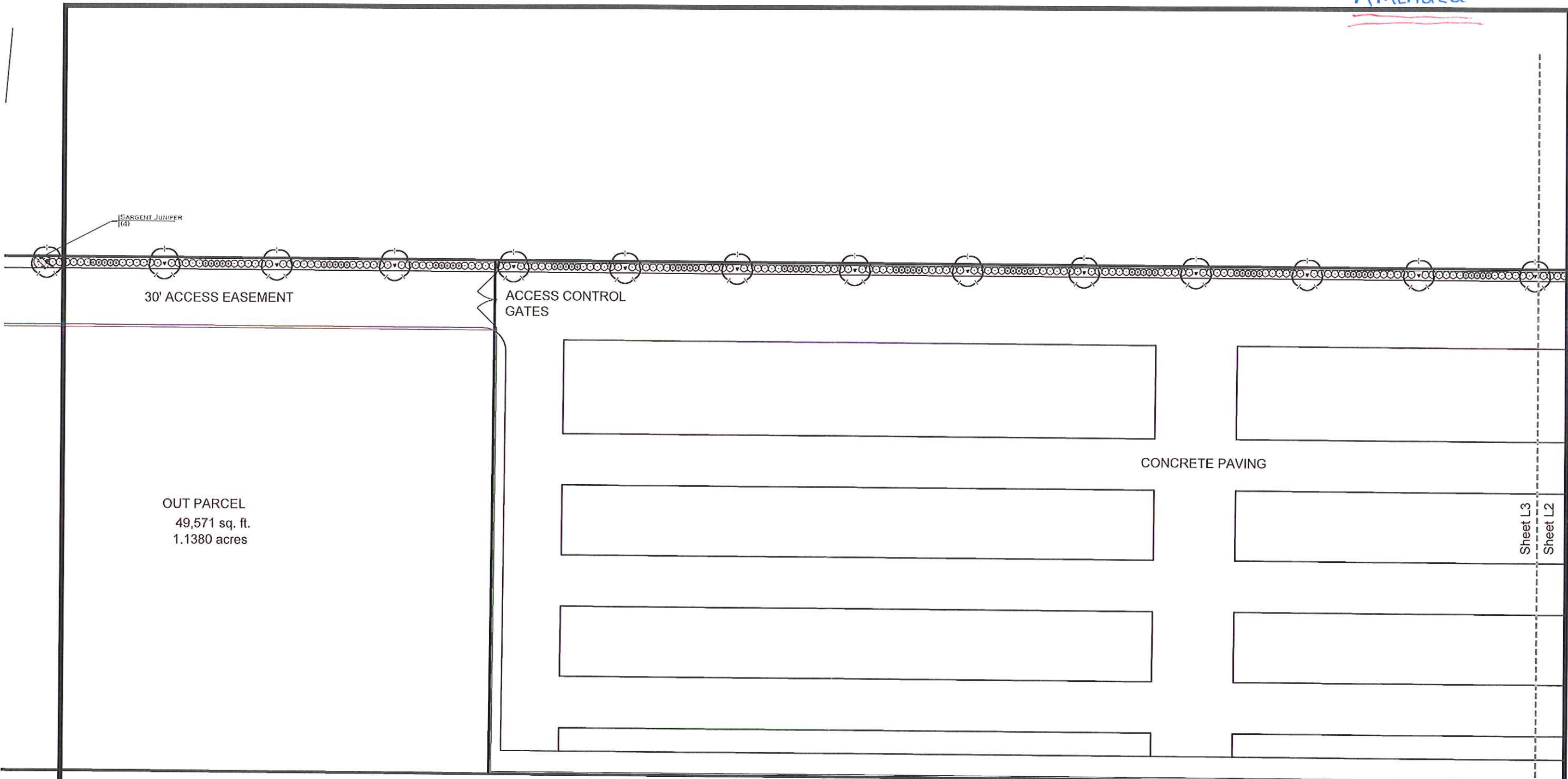


Landscape Planting Plan
STORAGE MAX
Madison County, Mississippi

DATE: 10-29-18
DRAWN: AMC
CHECKED:

L2

Amended



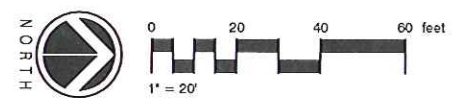
30' ACCESS EASEMENT

ACCESS CONTROL GATES

OUT PARCEL
49,571 sq. ft.
1.1380 acres

CONCRETE PAVING

Sheet L3
Sheet L2



P.O. BOX 2425
MADISON, MISSISSIPPI 39130
601-906-3477 PHONE
WWW.MCCORRYDESIGNS.COM



REVISIONS

Landscape Planting Plan
STORAGE MAX
Madison County, Mississippi

DATE: 10-29-18
DRAWN: AMC
CHECKED:

L3